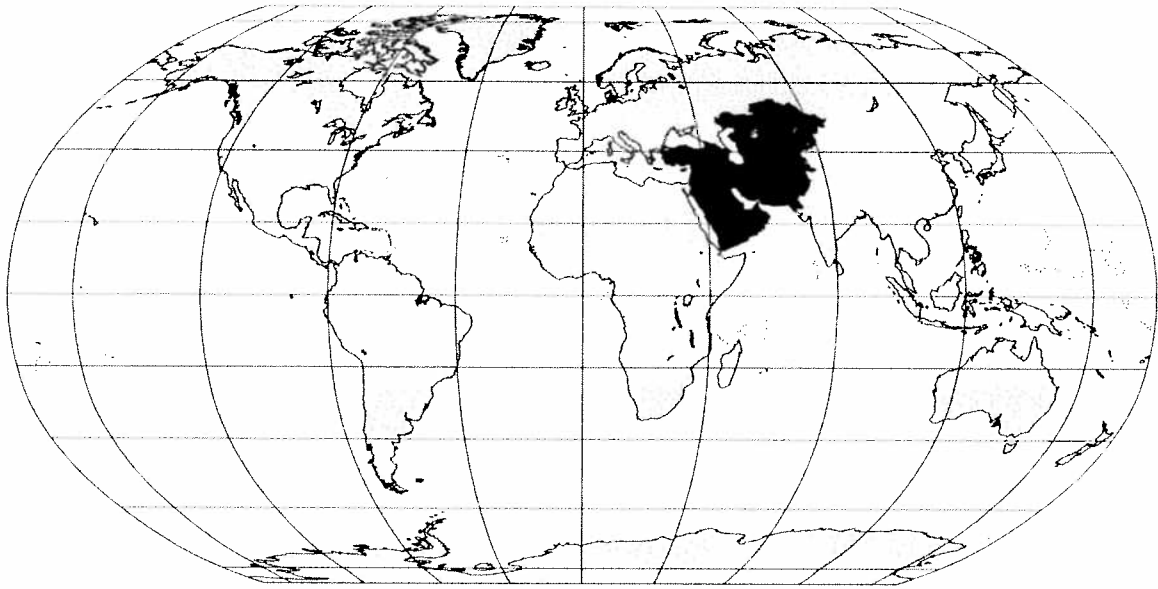

Southwest and Central Asia



Preview

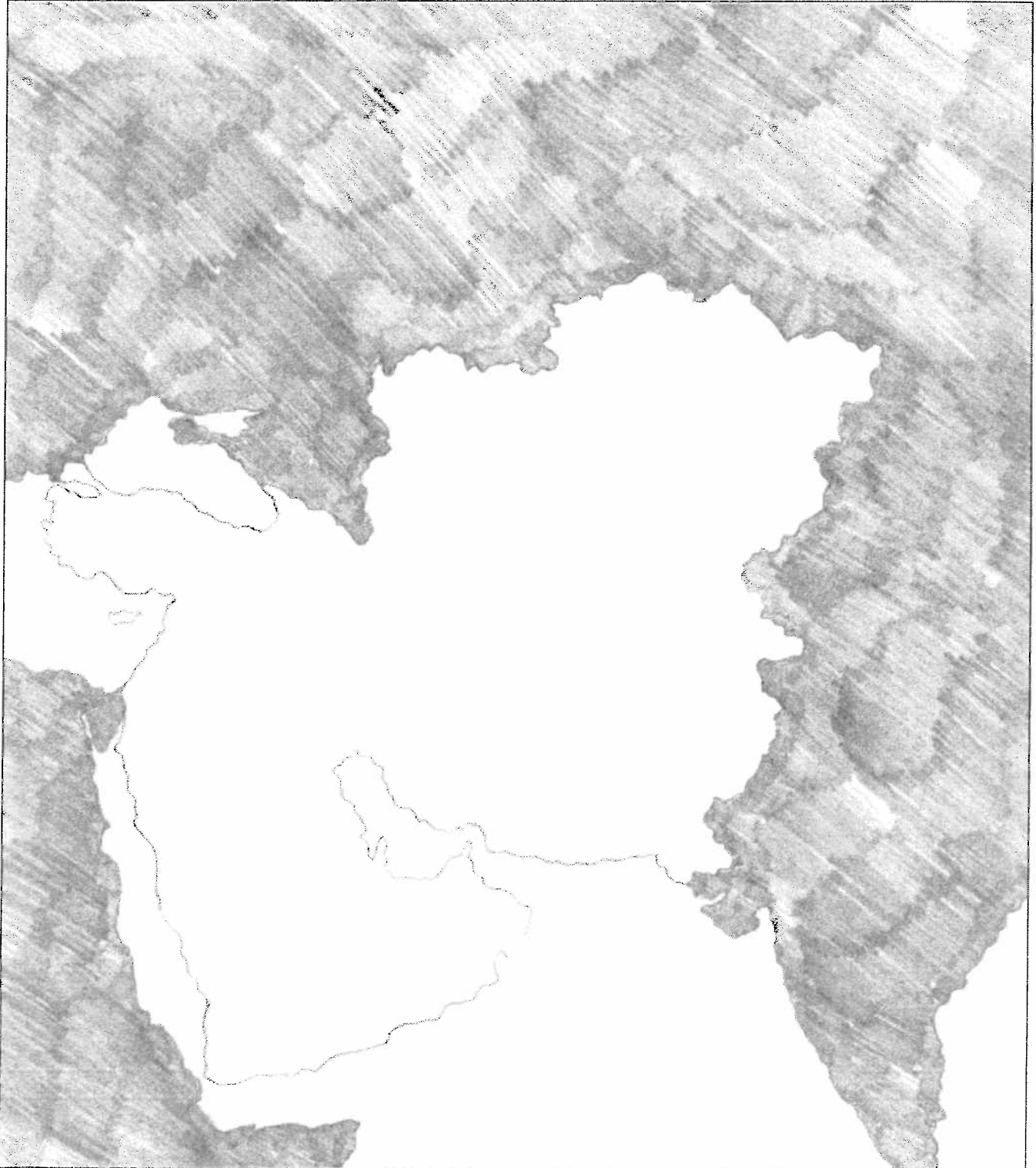
Making a Mental Map of the Region

Look at the outline map of Central and Southwest Asia on the next page. Add a compass rose to the map, showing where north, south, east, and west are. Then draw and label these features where you think they are located:

- at least two physical features (these could be mountains, rivers, lakes, or deserts)
- the other regions and the seas or gulfs that border this region
- the boundaries of any countries you think you know
- any area that you think has a very dry (arid) climate
- any area that you think is densely populated

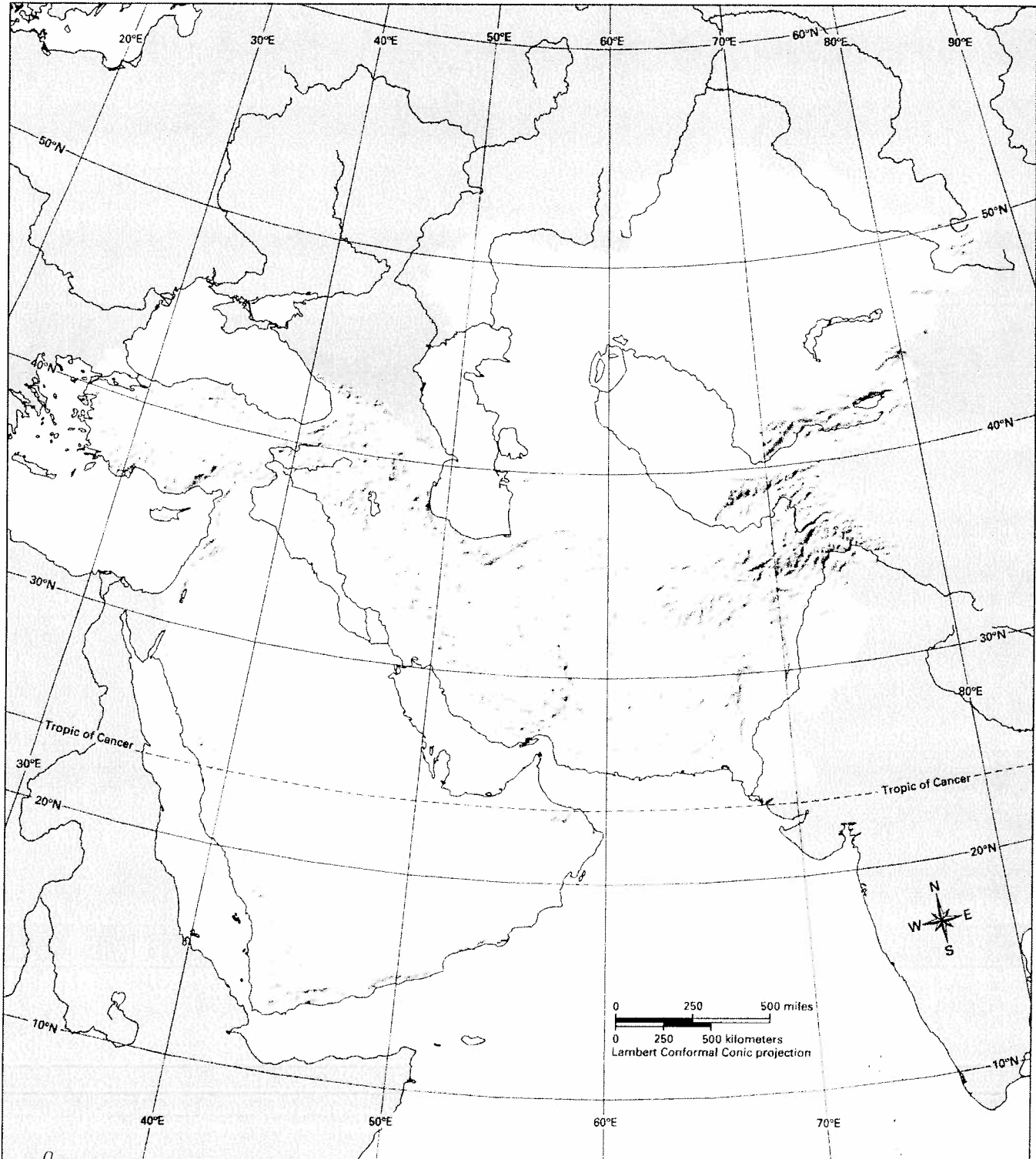
SOUTHWEST AND CENTRAL ASIA MAPPING LAB

Add details to the outline below based on your mental map of the region.



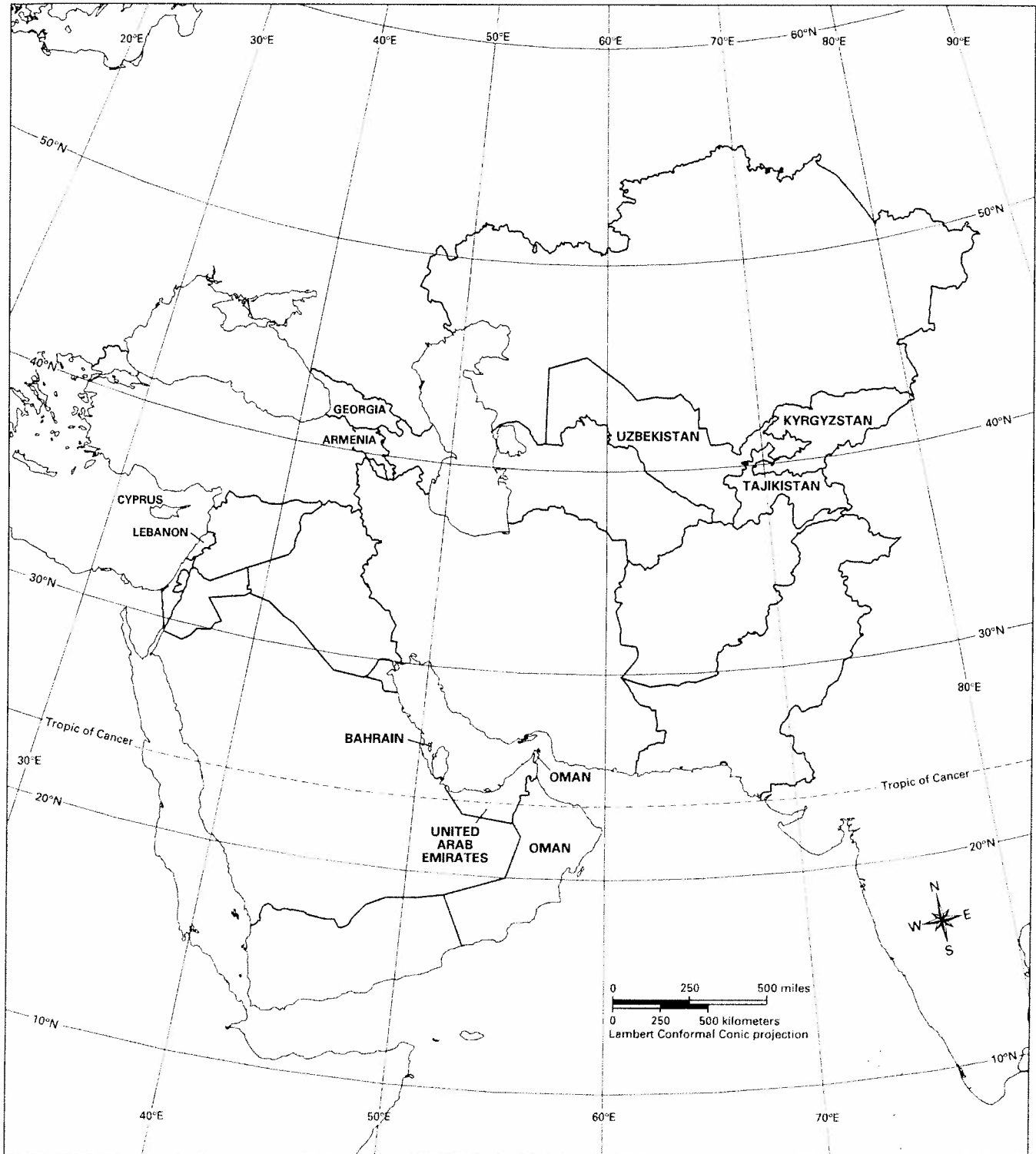
SOUTHWEST AND CENTRAL ASIA MAPPING LAB

Challenge 1 Learning About the Physical Geography of Southwest and Central Asia



SOUTHWEST AND CENTRAL ASIA MAPPING LAB

Challenge 2 Learning About the Human Geography of Southwest and Central Asia



SOUTHWEST AND CENTRAL ASIA MAPPING LAB

Challenge 3 Using Geography Skills to Answer “Where?”

Question	Circle the thematic map you used. Then answer the question in complete sentences.				
1	Physical Features	Climate Zones	Vegetation Zones	Population Density	Economic Activity
2	Physical Features	Climate Zones	Vegetation Zones	Population Density	Economic Activity
3	Physical Features	Climate Zones	Vegetation Zones	Population Density	Economic Activity
4	Physical Features	Climate Zones	Vegetation Zones	Population Density	Economic Activity
5	Physical Features	Climate Zones	Vegetation Zones	Population Density	Economic Activity
6	Physical Features	Climate Zones	Vegetation Zones	Population Density	Economic Activity
7	Physical Features	Climate Zones	Vegetation Zones	Population Density	Economic Activity
8	Physical Features	Climate Zones	Vegetation Zones	Population Density	Economic Activity
9	Physical Features	Climate Zones	Vegetation Zones	Population Density	Economic Activity
10	Physical Features	Climate Zones	Vegetation Zones	Population Density	Economic Activity

SOUTHWEST AND CENTRAL ASIA MAPPING LAB

Challenge 4 Using Geography Skills to Answer “Why There?”

Question	Circle the thematic maps you used. Then answer the question in complete sentences.				
1	Physical Features	Climate Zones	Vegetation Zones	Population Density	Economic Activity
2	Physical Features	Climate Zones	Vegetation Zones	Population Density	Economic Activity
3	Physical Features	Climate Zones	Vegetation Zones	Population Density	Economic Activity
4	Physical Features	Climate Zones	Vegetation Zones	Population Density	Economic Activity
5	Physical Features	Climate Zones	Vegetation Zones	Population Density	Economic Activity
6	Physical Features	Climate Zones	Vegetation Zones	Population Density	Economic Activity

SOUTHWEST AND CENTRAL ASIA MAPPING LAB

Challenge 5

Using Maps to Analyze a Field Photograph

	Location A (22° north, 48° east)	Location B (34° north, 50° east)	Location C (25° north, 67° east)
Physical Features			
Climate Zones			
Vegetation Zones			
Population Density			
Economic Activity			

SOUTHWEST AND CENTRAL ASIA MAPPING LAB

Challenge 5 Using Maps to Analyze a Field Photograph

We think the field photograph best matches Location ____ .

Supporting-Evidence Statements

1. From the _____ map, we learned that this location

_____ .

In the field photograph, we see _____

_____ .

2. From the _____ map, we learned that this location

_____ .

In the field photograph, we see _____

_____ .

3. From the _____ map, we learned that this location

_____ .

In the field photograph, we see _____

_____ .

4. From the _____ map, we learned that this location

_____ .

In the field photograph, we see _____

_____ .